



Telephone Number: 011 928 6433
 Email: camuhelpdesk@atns.co.za

Last Update: Monday, 22 November 2021 06:18 South African local time
 Next Telcon: Week days at 0630UTC excl. Public Holidays

ATC Overview – All times in UTC unless stated otherwise

Primary Aerodrome Issues

REFER TO NOTAMN A2282/21, A3018/21; A3019/21 RE COVID

FAOR	<p>COVID-19: A2520/21; A3122/21 CLR DELIVERY 121.7 MHZ OPS HR CHG TO: MON-FRI 0330-2000. SAT-SUN 0500-2000. OUTSIDE CLR HR OF DUTY, SER WILL BE AVBL ON SMC 121.9 MHZ. RWY 03R/21L CLSD. 15MIN PN TO VACATE. 2111201100 – 2111201230 RWY 03L/21R CLSD. 15PN TO VACATE. 2111200900 - 2111201100</p>	03	IMC	45
FACT	<p>COVID-19: A2936/21 CLR DELIVERY 122.100 MHZ HR OF SER. SAT-SUN: 0400-1700 ALL VFR FLT INBD AND OUBD FM CTR TO FILE FLT PLANS. ALL POLICE, MIL, MEDEVAC AND HOSP VFR FLT EXEMPTED. ALL VFR FLT REQUESTING CIRCUIT TRG TO CTC TWR ON 0219371116/1101 AT LEAST 30MIN PRIOR TO REQUESTING START. TWY A2 STOPBARS NOT INTERLOCKED. CTC TWR TO FLW PROC. TWR 118.1 MHZ TEMPO CHG TO 121.9 MHZ. APP 119.7 MHZ TEMPO CHANGED TO 124.35 MHZ.</p>	19	VMC	18
FALE	<p>A2563/21. ILS CAT II RWY 06 DOWNGRADED TO CAT I. ILS CAT II RWY 24 DOWNGRADED TO CAT I DUE LOC 109.7 MHZ SINGLE TRANS OPS. TWY A SIGNAGE U/S. SIGNAGE INDICATING TWY N U/S. TWY B TEMPO DOWNGRADED FM CODE F TO CODE C. (A2675/21) MAINT ON RWY 06/24 AND ALL TWY TAKING PLACE. 10MIN PN TO VACATE. ESCORT WILL BE PROVIDED AT ALL TIMES. DLY 1930-0230. 2111171930 - 2111200230</p>	06	VMC	18
FALA	<p>COVID 19: PRKG BAY C5, C6, C7 AND C8 CLSD. WIP ON APN A, B AND C. ONE PRKG BAY WILL BE CLSD AT A TIME. STEYN CITY GOLF COURSE, STEYN CITY, MIDRAND, GAUTENG: AEROBATICS DISPLAY TAKING PLACE. GND-6373FT</p>	07	IMC	16
FAGG	<p>AWOS U/S COVID-19: B1768/21 MON-FRI 0400-0430, SAT/SUN 0600-0630 RWY 11/29 INSPECTION TAKING PLACE. NIL TRG ALLOWED.</p>	29	IMC	15
FAPE	<p>DUE TO WITHDRAWAL OF SIDS AND STARS, IFR ACFT TO EXP NON-STD CLR COVID-19 B1460/21</p>	26	IMC	17
FAEL	<p>TWY B (FM RWY 06 HLDG POINT TIL TWY G INT) CLSD. COVID 19: C2757/21; C2987/21; B1539/21 AD/APP 120.1 MHZ/TWR 118.3MHZ/AD HR OF SER MON-FRI 0530-1630 SAT0600-1600 SUN 0600-1630.</p>	29	VMC	17
FABL	<p>COVID-19: A3108/21 TWR 120.8MHZ & APP 124.3MHZ OPS HR CHG TO: MON-FRI 0445-1715, SAT 0730-1400, SUN 0645-1715 STOPBAR LGT AND GUARD LGT U/S.</p>	02	VMC	12



Telephone Number: 011 928 6433
 Email: camuhelpdesk@atns.co.za

Last Update: Monday, 22 November 2021 06:18 South African local time
 Next Telcon: Week days at 0630UTC excl. Public Holidays

Secondary Aerodrome Issues

Location	Details
FAKM	STOPBAR ON HLDG POINT A1 & C1 U/S. COVID 19: C3097/21 TWR 118.2 MHZ OPS HR CHG TO MON-FRI 0530-1600 (BTN 0700-1300, 30MIN PN FOR SKED FLT, NON-SKED TO BCST BLIND), SAT 0700-1400 SUN 0745-1600. APP 119.4 MHZ OPS HR CHG TO: MON-FRI: 0530-1600, SAT: 0700-1400, SUN: 0745-1600.
FAKN	NDB PK 405.0 KHZ U/S. ALL ASSOCIATED PROC SUSPENDED. UNTIL 2111301600 EST APP 119.2 MHZ / TWR 119.2 MHZ OPS HR CHG TO: MON-FRI 0500-1700, SAT 0530-1430, SUN 0800-1700.
FAPN	CRASH ALARM U/S. ALL LDG AREA LGT FAC U/S. NIL NGT OPS PERMITTED. TWR 118.4 MHZ OPS HR CHG TO: MON-FRI 0600-1400 SAT-SUN 90MIN PN CTC KHOTSO RADEBE 0716105498 FOR EMERG ONLY. NIL AVGAS & JET A1 AVBL. ONLY CODE A ACFT WITH WINGSPAN OF NO MORE THAN 12M PERMITTED AT THE AD. DVOR/DME PNV 112.6 MHZ/CH 73X U/S. ALL ASSOCIATED PROC SUSPENDED.
FAPP	
FAPM	NDB PU 407 KHZ U/S. NDB PZ 257 KHZ U/S. NIL LGT FAC AVBL OUTSIDE ATC OPR HR. NGT OPS SUSPENDED. AD CLSD TO FIXED WING TFC, DLY 1800-0430 NDB OBI 280 KHZ U/S. NDB ORI 442.5 KHZ U/S. VOR/DME PMV 117.9 MHZ/CH 126X U/S.
FARB	TWR 118.9 MHZ CLSD ATZ DOWNGRADED TO CLASS G AIRSPACE.
FABE	TWR 120.6 MHZ CLSD. RWY 08/26 NOT INSPECTED. ALL LDG, DEP AND TGL AT PILOT DISCRETION
FAUT	PRIVATE CLOSE USER GROUP (PCUG) AND TEL LINES U/S. TEMPO CTC TEL NR 0664333871. DVOR/DME MHV 115.1 MHZ/CH 98X U/S. TWR 121.30 MHZ OPS HR CHG TO: MON-FRI 0400-1600 SAT 0400-1300 SUN 1000-1600; EV SUN 1300-1330 NIL TWR 121.30 MHZ SER AVBL RWY 14/32 VOR LETDOWN PROC WITHDRAWN.
FAWB	PAPI RWY 11 U/S. APP 118.35 MHZ OPS HR CHG TO 0500-1600. GND MOV CTL 120.6 MHZ OPS HR CHG TO 0600-1500. TWR 118.35 MHZ OPS HR CHG TO 0500-1600. NIL AVGAS AND JET A1 AVBL.
FAGM	VOR/DME RAV 117.7 MHZ/CH 124X U/S. TWR 118.7 MHZ HR OF SER: MON-FRI 0500-1700; SAT-SUN AND PUBLIC HOL 0500-1600. PAPI RWY 11/29 U/S.
FAUP	VOR/DME UPV 116.5 MHZ/CH 112X NOT AVBL, AWAITING CLBR. ALL ASSOCIATED PROC SUSPENDED. TEL LINES AND PCUG U/S. TEMPO CTC NR 0665122688. TWR 121.3 MHZ OPS HR CHG TO: MON-FRI: 0530-1600 SAT: 0830-1130 SUN: 0830-1600. COVID-19: A2535/21; A2545/21; A2546/21 CRASH ALARM INTERMITTENT. NIL IMMIGRATION SER AVBL, EXC FOR CARGO AND MEDEVAC OR HOSP FLT. AD TO BE USED AS A TECHNICAL STOP FOR REFUELLING PURPOSES.



Telephone Number: 011 928 6433
 Email: camuhelpdesk@atns.co.za

Last Update: Monday, 22 November 2021 06:18 South African local time
 Next Telcon: Week days at 0630UTC excl. Public Holidays

Issues expected to impact service delivery

Location	Details
CAMU	SLOTS: REF NTM A2282/21
FAJA	<p>FAHG: AEROBATICS BOX ESTABLISHED GND TO 9000FT AMSL,DLY 0500-1630. FAPH: AEROBATICS BOX ESTABLISHED WI 1NM RADIUS. GND TO 6000FT AMSL,DLY 0500-1630. UPV, RAV,GAV,ABV MMV, VV, UD, SMH, UL, KD, BM, CZV,WKV, PU, PZ, OBI, ORI, PK, PJV, PNV, PMV, MHV U/S MEV TEMPO WITHDRAWN (VOR/DME MEV (254727.35S 0283340.81E) WILL BE REF AS POINT MEV. REF NOTAM A2346/21); GWV SER SUSPENDED. ELLISRAS VHF RELAY STN 126.7 MHZ U/S. LEEUKOP VHF RELAY STN 119.5 MHZ U/S. JERICHO VHF RELAY STN 119.5 MHZ AND 128.3 MHZ U/S.</p> <p>5NM CENTRED AT FARM DWARSFONTEIN, DELMAS, MPUMALANGA (260242S0284825E): TEMPO DROP ZONE EST. 0600-1500, GND-16000FT AMSL</p> <p>FARM PLOT PORTION 76, LEEUPOORT 283 JS, WITBANK (254820S 0291301E)TEMPO DROP ZONE ESTABLISHED. GND-16200FT AMSL. DLY 0600-1600</p>
FACA	<p>CTV, SVV, CB,RIV,CSV,PY,SLV, MHV, NVV U/S HUMANSDORP VHF RELAY STN 120.4 MHZ, 127.575 MHZ AND 124.7 MHZ U/S.</p>
FAJO FACA FAJA	REFER TO NOTAM A3019/21

Forecast Military Activity

Location	Details
FAR148	ALKANTPAN AND BEYOND: MISSILE FRNG TAKING PLACE.GND/FL600. DLY 0600-1430. EXC SAT,SUN AND HOL
FATP	DLY 0800-1600 MIL PJE TAKING PLACE GND-FL100.
FAR147	REMOTELY PILOTED AIRCRAFT SYSTEMS (RPAS) OPS TAKING PLACE. SFC-FL180. DLY 0800-1900



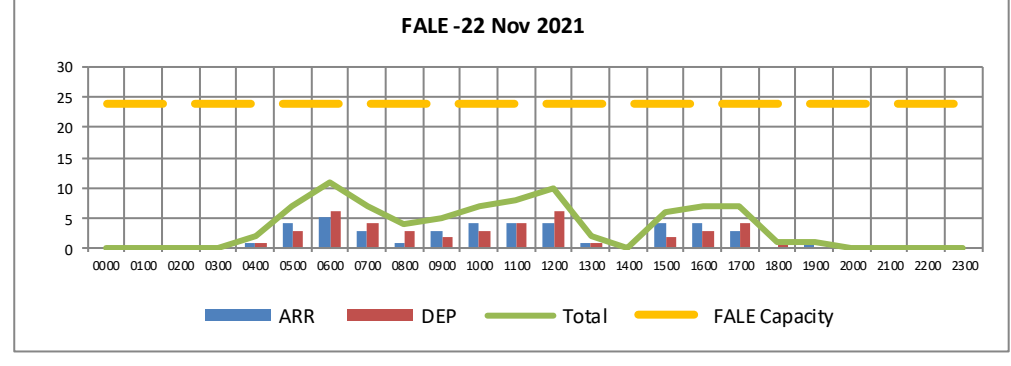
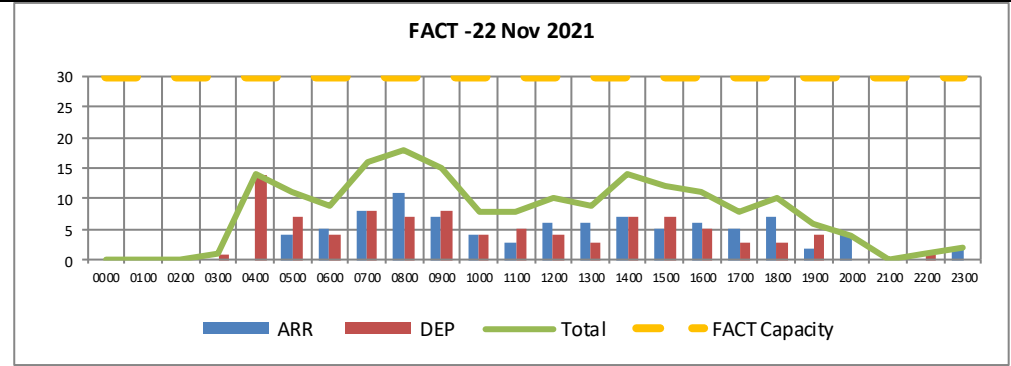
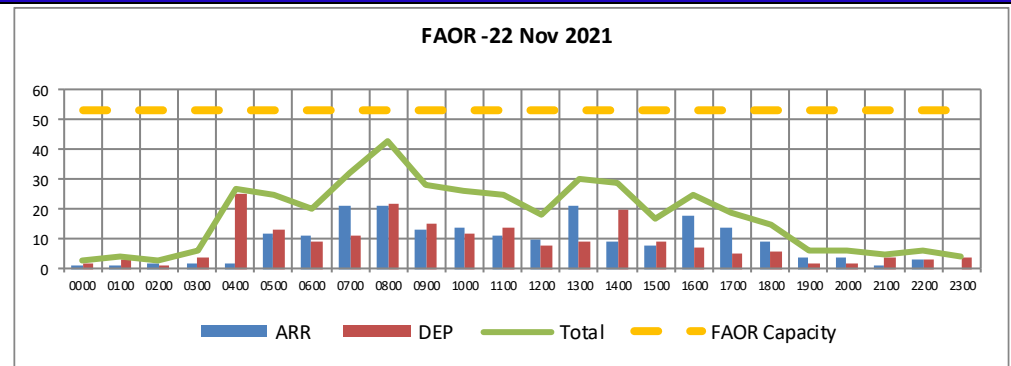
Telephone Number: 011 928 6433
 Email: camuhelpdesk@atns.co.za

Last Update: Monday, 22 November 2021 06:18 South African local time
 Next Telcon: Week days at 0630UTC excl. Public Holidays

Airport Slots Demand @0400Z

Capacity	30	30	53	24	24	30	18	18	24	
Airport	FAOR			FACT			FALE			
ARR/DEP/TOT UTC	ARR	DEP	TOT	ARR	DEP	TOT	ARR	DEP	TOT	
0000	0100	1	2	3	0	0	0	0	0	0
0100	0200	1	3	4	0	0	0	0	0	0
0200	0300	2	1	3	0	0	0	0	0	0
0300	0400	2	4	6	0	1	1	0	0	0
0400	0500	2	25	27	0	14	14	1	1	2
0500	0600	12	13	25	4	7	11	4	3	7
0600	0700	11	9	20	5	4	9	5	6	11
0700	0800	21	11	32	8	8	16	3	4	7
0800	0900	21	22	43	11	7	18	1	3	4
0900	1000	13	15	28	7	8	15	3	2	5
1000	1100	14	12	26	4	4	8	4	3	7
1100	1200	11	14	25	3	5	8	4	4	8
1200	1300	10	8	18	6	4	10	4	6	10
1300	1400	21	9	30	6	3	9	1	1	2
1400	1500	9	20	29	7	7	14	0	0	0
1500	1600	8	9	17	5	7	12	4	2	6
1600	1700	18	7	25	6	5	11	4	3	7
1700	1800	14	5	19	5	3	8	3	4	7
1800	1900	9	6	15	7	3	10	0	1	1
1900	2000	4	2	6	2	4	6	1	0	1
2000	2100	4	2	6	4	0	4	0	0	0
2100	2200	1	4	5	0	0	0	0	0	0
2200	2300	3	3	6	0	1	1	0	0	0
2300	2400	0	4	4	2	0	2	0	0	0

Above	24	24	42	19	19	24	14	14	19
Above	27	27	48	22	22	27	16	16	22



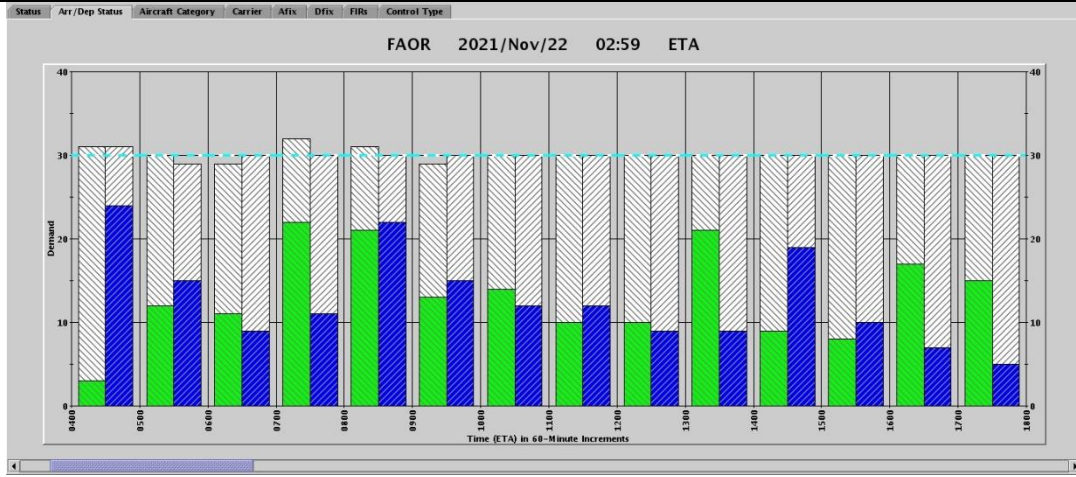


Telephone Number: 011 928 6433
 Email: camuhelpdesk@atns.co.za

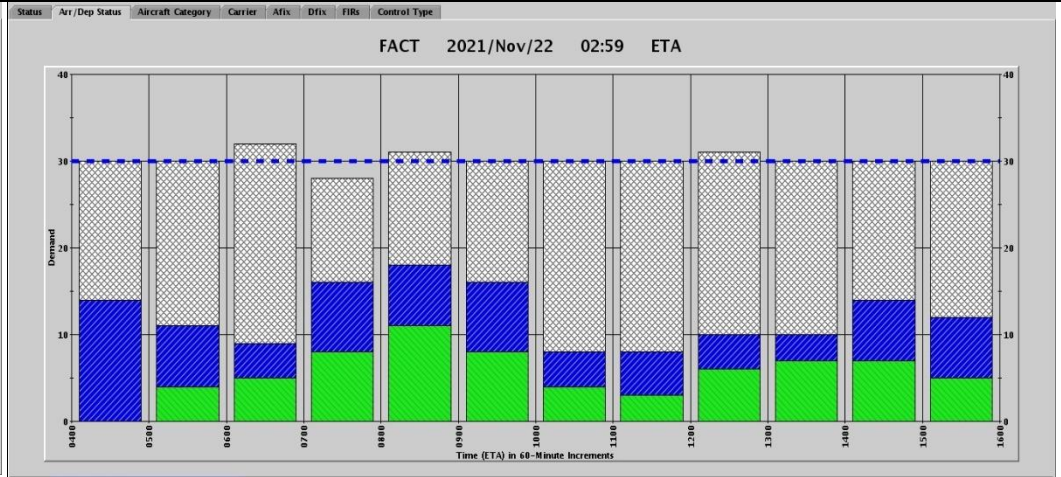
Last Update: Monday, 22 November 2021 06:18 South African local time
 Next Telcon: Week days at 0630UTC excl. Public Holidays

Airport Flow Tool (AFT) Pre-Tactical Demand

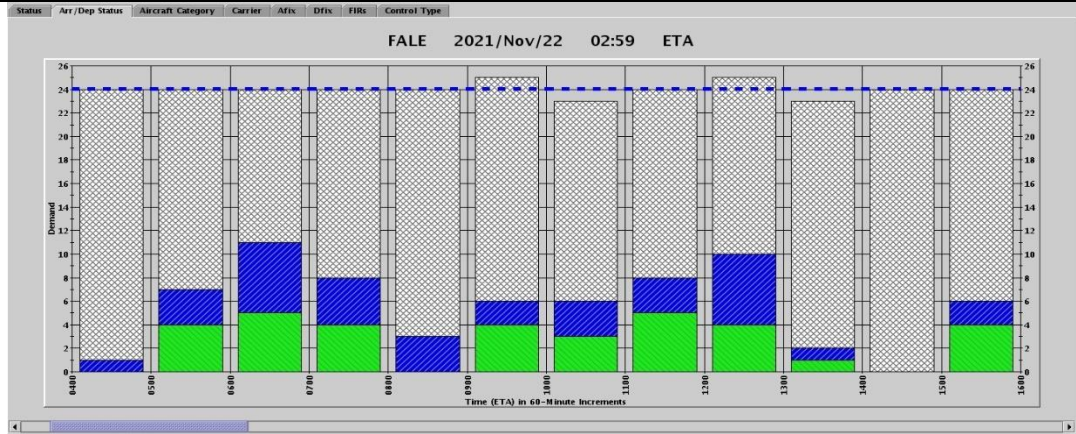
FAOR



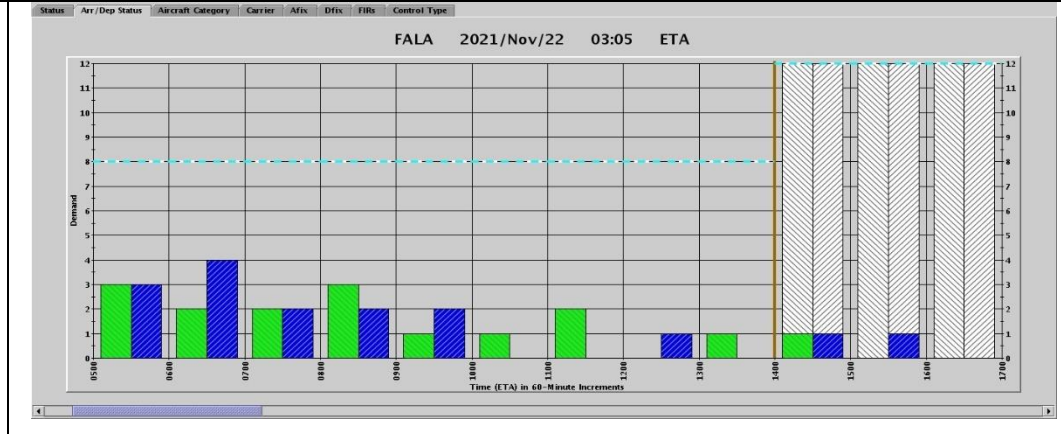
FACT



FALE



FALA



Summary of pre-tactical demand

Combined peaks: FAOR: 0800-0900Z

FACT: 0800-0900Z

FALE: 0600-0700Z



Telephone Number: 011 928 6433
Email: camuhelpdesk@atns.co.za

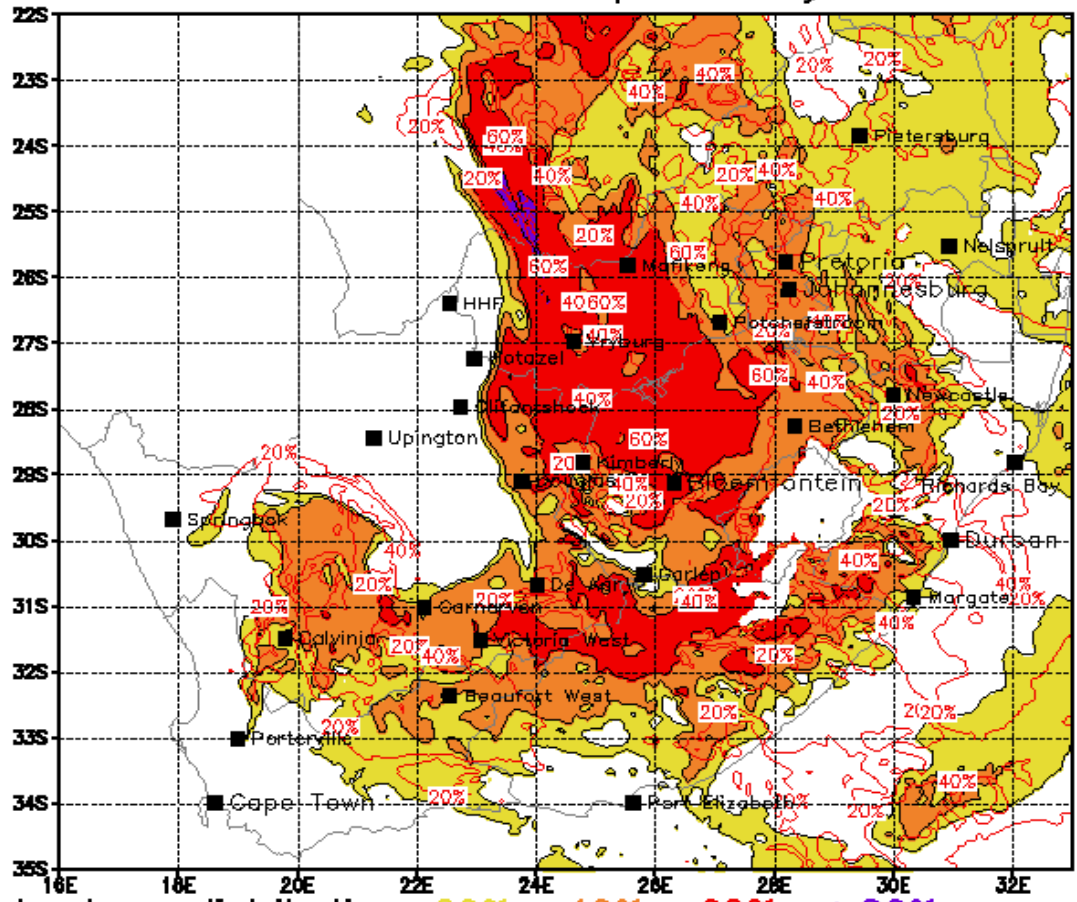
Last Update: Monday, 22 November 2021 06:18 South African local time
Next Telcon: Week days at 0630UTC excl. Public Holidays

Thunderstorm Probability

Analysis:00Z 21 NOV 2021

Valid:15Z 22 NOV 2021 SA4

Thunderstorm probability



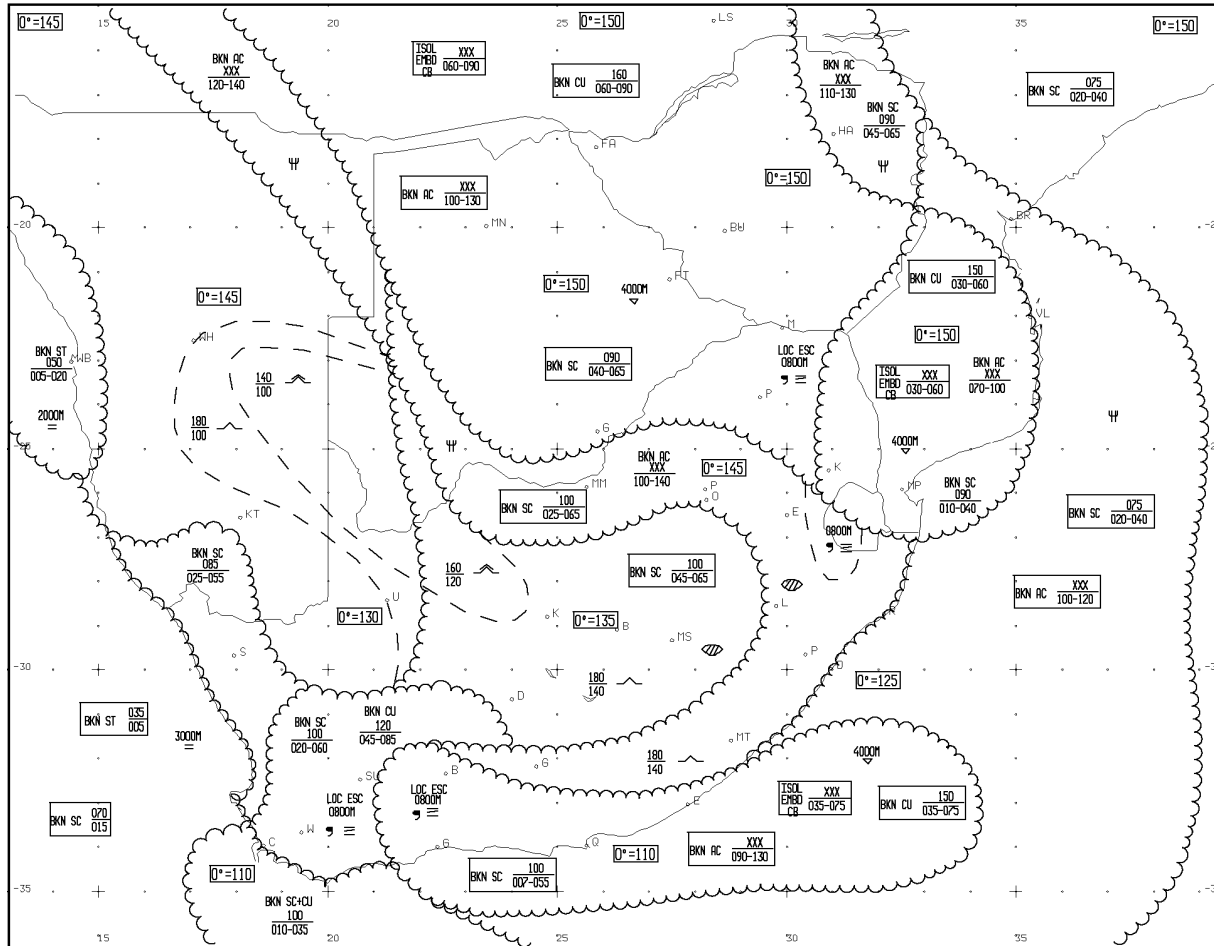
Thunderstorm distribution: 20%; 40%; 60%; >80%;
Shaded area=TS prob at 14:00 redlines show 17:00

Telephone Number: 011 928 6433
 Email: camuhelpdesk@atns.co.za

Last Update: Monday, 22 November 2021 06:18 South African local time
 Next Telcon: Week days at 0630UTC excl. Public Holidays

Weather Overview

Significant Weather Below FL180

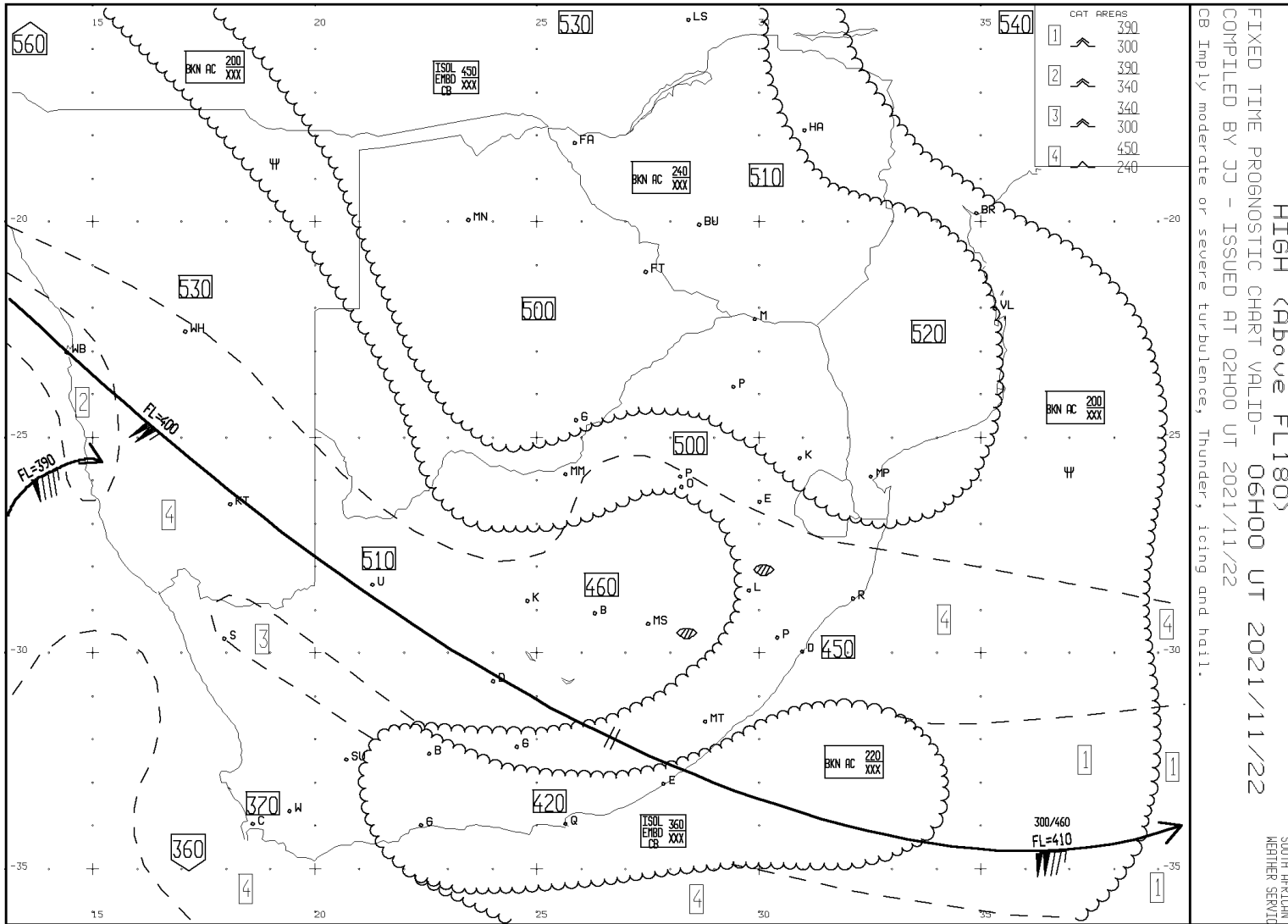


LOM (Below FL180)
 FIXED TIME PROGNOSTIC CHART VALID - 06H00 UT 2021/11/22
 COMPILED BY JJ - ISSUED AT 02H00 UT 2021/11/22
 CB Imply moderate or severe turbulence, Thunder, icing and hail.

Telephone Number: 011 928 6433
 Email: camuhelpdesk@atns.co.za

Last Update: Monday, 22 November 2021 06:18 South African local time
 Next Telcon: Week days at 0630UTC excl. Public Holidays

Significant Weather Above FL180



HIGH (Above FL180)
 FIXED TIME PROGNOSTIC CHART VALID - 06H00 UT 2021/11/22
 COMPILED BY JJ - ISSUED AT 02H00 UT 2021/11/22
 CB Imply moderate or severe turbulence, Thunder, icing and hail.
 SOUTH AFRICAN
 WEATHER SERVICE



Telephone Number: 011 928 6433
 Email: camuhelpdesk@atns.co.za

Last Update: Monday, 22 November 2021 06:18 South African local time
 Next Telcon: Week days at 0630UTC excl. Public Holidays

Weather Overview

Primary Aerodromes

Location	Weather (note: IMC = cloud base below 1500ft/red viz of 5000m, LVO = Cloud base below 200ft and RVR of less than 600m)
FAOR	TEMPO 2200/2206 3000 BR OVC002 LVO PROB30 TEMPO 2200/2204 0500 FG VV001 LVO BECMG 2208/2210 BKN015 PROB30 TEMPO 2212/2216 -TSRA FEW030CB PROB40 TEMPO 2220/2301 5000 TSRA BKN005 FEW030CB IMC
FACT	NOSIG
FALE	PROB30 TEMPO 2200/2203 5000 SHRA BKN015 FEW030TCU TEMPO 2210/2216 06020G30KT PROB40 TEMPO 2215/2221 4000 TSRA BKN015 FEW030CB IMC TEMPO 2221/2301 22018G28KT 5000 SHRA BKN015 FEW030CB IMC
FALA	TEMPO 2200/2206 4000 BR BKN007 IMC PROB30 TEMPO 2200/2204 0800 FG OVC002 LVO PROB40 TEMPO 2220/2224 5000 TSRA BKN010 FEW030CB IMC
FAGG	PROB40 TEMPO 2202/2209 2500 +TSRA FEW045CB IMC TEMPO 2210/2218 3000 SHRA FEW045TCU IMC
FAPE	TEMPO 2200/2207 1000 DZ BR BKN006 IMC BECMG 2206/2208 SCT008 SCT012 TEMPO 2206/2210 6000 -TSRA SHRA SCT060TCU FEW080CB PROB30 2211/2212 22020G30KT BECMG 2213/2215 BKN012 IMC
FAEL	PROB40 TEMPO 2203/2212 BKN008 IMC PROB30 TEMPO 2203/2212 5000 TSRA FEW060CB IMC
FABL	PROB30 TEMPO 2212/2218 -TSRA FEW035CB

Secondary Aerodromes

Location	Weather
FAPP	TEMPO 2204/2210 -TSRA BKN010 FEW030CB IMC BECMG 2206/2208 03010KT OVC010 IMC PROB30 TEMPO 2210/2215 -TSRA BKN015 FEW035CB
FAKN	TEMPO 2204/2215 3000 BR -TSRA BKN005 OVC010 FEW030CB IMC PROB40 TEMPO 2204/2209 0800 FG OVC001 IMC BECMG 2209/2211 BKN015



Telephone Number: 011 928 6433
 Email: camuhelpdesk@atns.co.za

Last Update: Monday, 22 November 2021 06:18 South African local time
 Next Telcon: Week days at 0630UTC excl. Public Holidays

Weather Conditions – Qualitative Overview

	Tunderstorms		Low Cloud/Visibility		Wind/Turbulence	
FAOR		FROM 1200Z	UNTIL 1000Z			
FACT						
FALE		FROM 1500Z	UNTIL 0300Z			1000Z-1600Z
FALA		FROM 2000Z	UNTIL 0600Z			
FAGG	UNTIL 0900Z			1000Z-1800Z		
FAPE	0600Z-1000Z		UNTIL 0800Z	1300Z-1500Z		1100Z-1200Z
FAEL	FROM 0300Z	UNTIL 1200Z	FROM 0300Z	UNTIL 1200Z		
FABL		1200Z-1800Z				
FAKN	FROM 0400Z	UNTIL 1500Z				
FAPP		1000Z-1500Z	UNTIL 1000Z			

Favourable	Minimal impact to operations expected
Marginal	Some potential for operations to be impacted on
Unfavourable	Impact on operations likely